

Operation manual

RVO/U-2 Module BASICS

Flow Monitor



Series RVO/U-2

Type RVO/U-2/05 thru RVO/U-2/28

Read this manual prior to performing any task!

Meister Strömungstechnik GmbH
Im Gewerbegebiet 2
63831 Wiesen
Germany
Telephone: +49 6096 9720 - 0
Fax: +49 6096 9720 - 30
E-mail: sales@meister-flow.com
Internet: www.meister-flow.com

RVO/U-2 Module BASICS, 1, en_US

These instructions were compiled by:
Meister Strömungstechnik GmbH
Subject to change without notice

© Meister Strömungstechnik GmbH 2013

These instructions facilitate the safe and efficient handling of a flow monitor (referred to as "device" in the following). The instructions are an integral part of the device and must be kept within easy reach for the personnel in the immediate vicinity of the device at all times. Personnel must carefully read and understand these instructions before commencing all work. The basic requirement for safe work is adherence to all safety and handling instructions stipulated in these instructions. The local accident-prevention regulations and general safety standards and regulations for the field of application of the device also apply. Illustrations in these instructions are provided to aid general understanding and might deviate from the actual model. No claims can be derived from any such differences.

Limitations of liability

All details and instructions in this manual have been compiled under consideration of the valid standards and regulations, the current state-of-technology and our many years of knowledge and experience. The manufacturer does not accept any liability arising from:

- non-observance of any details in these instructions
- improper use of the device, or use that is not in accordance with these instructions
- use of non-trained personnel
- unauthorized retrofitting or technical changes that have not been authorized by the manufacturer
- use of non-approved replacement parts

The duties and obligations agreed upon in the delivery contract apply in full, as well as the general terms and conditions, the terms of delivery by the manufacturer and the valid legal regulations applicable at the conclusion of the contract.

Copyright

These operating instructions are protected by copyright.

Except for internal purposes, transfer of these instructions to third-parties, copying them in any way – even in part – as well as dissemination and/or communication of their content is forbidden without prior written authorization from Meister Strömungstechnik ("manufacturer"). Violations are subject to claims for indemnification. The manufacturer reserves the right to assert additional claims.

Copyright is the property of the manufacturer.

© Meister Strömungstechnik GmbH

Im Gewerbegebiet 2

63831 Wiesen

Germany

Table of contents

1	Overview	7
	1.1 Short description.....	7
	1.2 Warranty and guarantee provisions.....	7
	1.3 Customer service.....	7
2	Safety	8
	2.1 Explanation of symbols.....	8
	2.2 Correct use in accordance with these instructions.....	9
	2.3 Special precautions.....	10
	2.3.1 Hazards from electrical current.....	11
	2.3.2 Mechanical hazards.....	11
	2.3.3 Hazards from high or low temperatures.....	12
	2.3.4 Radiation hazards.....	12
	2.3.5 Hazards caused by media.....	13
	2.4 Personnel requirements.....	13
	2.5 Personal safety equipment.....	14
	2.6 Protective systems.....	15
	2.7 Replacement parts.....	15
	2.8 Environmental protection.....	15
	2.9 Responsibility of the owner.....	16
3	Design and function	18
	3.1 Overview.....	18
	3.2 Device description.....	18
	3.3 Component description.....	19
4	Transport, packaging and storage	20
	4.1 Safety instructions for transport.....	20
	4.2 Transport inspection.....	20
	4.3 Packaging.....	20
	4.4 Symbols on the shipping box.....	21
	4.5 Storage.....	21
5	Installation and initial startup	22
	5.1 Safety.....	22

5.2	Requirements at the place of installation.....	22
5.3	Preparatory work.....	23
5.4	Installation in the pipe system.....	26
5.5	Initial startup.....	30
5.6	Electrical connection.....	30
5.6.1	Switch contact SG-15 with connector in compliance with EN175301-803.....	31
5.6.2	Plug connector M12x1.....	32
5.6.3	Cable.....	33
5.6.4	Degree of protection (IP-Code).....	33
5.7	Grounding the device.....	33
5.8	Plug connection.....	34
5.9	Contact protection measures.....	36
6	Operation.....	39
6.1	Setting the switch point.....	39
6.2	Checking the flow.....	41
7	Troubleshooting.....	42
7.1	Safety.....	42
7.2	Troubleshooting guide.....	44
8	Maintenance.....	46
8.1	Safety.....	46
8.2	Maintenance plan.....	46
8.3	Removal from the pipe system.....	47
8.4	Disassembly.....	48
8.5	Maintenance.....	51
8.5.1	Cleaning.....	52
8.5.2	Parts replacement.....	52
8.5.3	Assembly.....	52
8.5.4	Switch contact replacement.....	59
8.6	Measures to be taken after maintenance work.....	61
9	Disassembly and disposal.....	62
9.1	Safety.....	62
9.2	Disassembly.....	62

9.3	Return Materials.....	62
9.3.1	Return Materials Authorization.....	62
9.4	Disposal.....	63
10	Technical data.....	64
10.1	Device data plate.....	64
10.2	Switch contact rating plate.....	64
10.3	Dimension sheet.....	65
10.4	General specifications.....	67
10.5	Electrical specifications.....	68
10.6	Measuring ranges.....	70
10.6.1	Standard measuring ranges.....	70
10.7	Operating data.....	70
11	Appendix.....	72
11.1	Tightening torque.....	72
11.2	Replacement parts.....	73
11.3	Tools.....	74
11.4	Sealant.....	74
11.5	Lubricants.....	75
12	Index.....	76

1 Overview

1.1 Short description

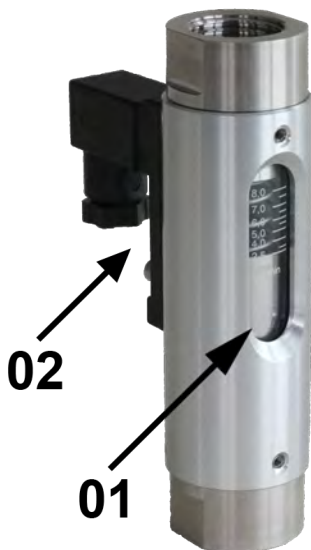


Fig. 1: RVO/U-2 flow monitor

- 01 Sight glass with measuring scale
- 02 Switch contact with female socket or sealed-in cable

The flow monitor RVO/U-2 monitors the continuous flow of liquids. It is designed for installation in pipe systems.

A float inside the device is moved by the medium flowing through it. The current rate of flow can be read-off on the measuring scale of the sight glass. The top edge of the float is the read-off point.

External measuring devices can be connected at the socket.

1.2 Warranty and guarantee provisions

Warranty and guarantee provisions are contained in the general terms and conditions of the manufacturer.

1.3 Customer service

For technical support, please contact our customer service department (for contact details, see Page 2).

Furthermore, our staff is always interested in receiving new information and experiences gained from application of the device, which may be useful in improving our products.

2 Safety

This chapter provides an overview of important safety aspects required for optimum protection of personnel as well as for safe installation and safe operation of the device.

Non-observance of the handling and safety instructions listed in this manual may result in hazardous/dangerous conditions and in damage to property.

2.1 Explanation of symbols

Safety instructions

Safety instructions in this manual are marked by symbols. The safety instructions are preceded by signal words that indicate the level of danger/hazard.

To prevent accidents or injury to persons as well as damage to property, always observe the safety instructions and proceed carefully.

 **DANGER**

This combination of symbol and signal word indicates an immediate, dangerous condition that results in death or serious injury if it is not avoided.

 **WARNING**

This combination of symbol and signal word indicates a possibly dangerous condition that might result in death or serious injury if it is not avoided.

 **CAUTION**

This combination of symbol and signal word indicates a possibly dangerous condition that might result in minor or slight injury if it is not avoided.

NOTICE

This combination of symbol and signal word indicates a possibly dangerous condition that might result in damage to property and to the environment if it is not avoided.

Tips and recommendations



This symbol emphasizes useful tips and recommendations as well as information for efficient and failure-free operation.

Signs used in these instructions

The following signs and highlightings are used in these instructions to identify handling instructions, the description of results, lists/enumerations, references and other elements:

- ➔ Designates step-by-step handling instructions
- ⇒ Designates a state or an automatic sequence as a result of a specific operating step
- Designates randomly ordered enumerations and list entries
- 🔗 “Signs used in these instructions” on page 9, designates references to chapters in these instructions

2.2 Correct use in accordance with these instructions

The device is designed and constructed exclusively for the intended use described herein.

Table 1: Correct use in non-hazard areas

The flow monitor serves exclusively to monitor the continuous flow of liquids within a temperature range of -20 °C to 100 °C (optional: 160 °C) at a maximum operating pressure of 16 bar.

Correct use in explosion-hazard zones

For employment in explosion-hazard zones, changed conditions apply for the intended use.

The intended use in explosion-hazard zones is described in the Operating Instructions "RVO/U-2 Module ATEX".

Intended use in explosion-hazard zones includes the observance of all specifications in these Operating Instructions, as well as those for "RVO/U-2 Module ATEX".

Any additional or different application, above and beyond the correct use in accordance with these instructions, is deemed as incorrect use.



Danger due to incorrect use!

- Use the flow monitor only within the stipulated performance limits

- Do not subject the flow monitor to severe temperature fluctuations
- Do not use the flow monitor with quick-acting valves
- Do not use the flow monitor with solenoid valves
- Do not subject the flow monitor to vibrations
- Do not subject the flow monitor to pressure surges
- Do not use the flow monitor with media containing solids or abrasives
- Only use the flow monitor with media previously approved by the manufacturer
- Do not use the flow monitor as the sole monitoring device to prevent dangerous conditions
- Do not install the flow monitor as a load bearing part within a pipeline system
- The flow monitor with sight glass must be installed in such a way as to preclude damage to the sight glass by outside force. If necessary, install an appropriate impact protection device

Incorrect use of the flow monitor may result in dangerous situations.

All claims for damages due to incorrect use are excluded.

2.3 Special precautions

The following section lists residual risks that might arise from the device.

To reduce health risks and prevent dangerous situations, observe the safety instructions listed here as well as the safety instructions in the other chapters of these operating instructions.

 **DANGER**

Employment of the device in explosion-hazard zones requires the observance of the Operating Instructions for "RVO/U-2 Module ATEX" including all hazard statements and warnings, therein.



These operating instructions cannot cover all conceivable dangers because many dangers arise, not from the device itself, but from the respective media flowing through it. Always observe the appropriate safety data sheets when using hazardous media!

2.3.1 Hazards from electrical current

Electrical current

 **DANGER**

Danger to life from electrical current!

- Only qualified electricians shall work on the electrical system.
- If the insulation is damaged, immediately switch off and have repairs performed.
- Before commencing work on live parts of the electrical systems and operating equipment, disconnect the equipment and ensure that it remains disconnected for the duration of the work. Observe these 5 safety rules when doing so:
 - Isolate (disconnect)
 - Secure against switching back on
 - Check for absence of voltage
 - Ground and short
 - Cover or cordon off other live parts in the vicinity
- Never bridge fuses or put them out of operation. Always observe the correct current ratings when replacing fuses
- Keep moisture away from live parts. This can result in short-circuit

There is an immediate risk to life from electrocution on touching live parts. Damaged electrical insulation or components can be extremely dangerous.

2.3.2 Mechanical hazards

 **WARNING**

Risk of injury from glass breakage!

- Keep within the stipulated operating limits
- Wear personal protective equipment
- Avoid severe temperature fluctuations
- Avoid pressure surges

The sight glass in the flow monitor can burst due to excessive temperature or pressure. There is a risk of injury from glass splinters and escaping media.

 **CAUTION**

Risk of injury on sharp edges and pointed corners!

- Proceed with caution when working near sharp edges and pointed corners.
- If in doubt, wear protective gloves.

Sharp edges and pointed corners can cause abrasions and skin cuts.

2.3.3 Hazards from high or low temperatures

Hot or cold surfaces

WARNING

Risk of injury from hot or cold surfaces!

- Always wear temperature-resistant protective work clothing and protective gloves when working near hot/cold surfaces
- Before commencing work, make sure that all surfaces have been cooled down or warmed up to ambient temperature

Surfaces of components may heat up/cool down dramatically due to the media flowing through them. Skin contact with hot or cold surfaces may cause severe skin burn or frostbite.

2.3.4 Radiation hazards

Strong magnetic fields

WARNING

Danger to life from strong magnetic fields!

- Persons with pacemakers must not be located in the vicinity of the device. This could impair the function of the pacemaker
- Persons with metal implants must not be located in the vicinity of the device. Implants can heat up or be attracted magnetically
- Keep ferromagnetic materials and electromagnets away from the magnetic source. These materials could be attracted and fly through the room, thereby injuring or even killing persons. Minimum clearance: 3 m
- Remove and put away metal objects before maintenance work (jewelry, watches, writing implements, etc.)
- Do not place any electronic devices within the vicinity of the magnetic source. These could be damaged
- Do not place any electronic storage media, credit cards, etc. within the vicinity of the magnetic source. Data could be deleted

Strong magnetic fields may cause severe injury or even be fatal, as well as cause considerable damage to property.

2.3.5 Hazards caused by media

Hazardous media



Risk of injury from hazardous media!

- Observe details in the safety data sheet of the media
- Comply with the safety, accident prevention and environmental protection regulations appropriate to the media used
- Wear personal protective equipment in accordance with the safety data sheet

If the flow monitor is used for toxic, corrosive or very hot/cold media, there is a risk of serious injury from escaping media.

2.4 Personnel requirements



Risk of injury due to insufficiently trained and qualified personnel!

- All work must be performed by qualified personnel only.
- Keep unqualified personnel away from hazard zones.

If unqualified personnel work on the device or are located within its hazard zone, dangers arise which may result in serious injury and considerable damage to property.

Authorized personnel is to be restricted to those persons who can be expected to perform their work reliably. Persons whose ability to respond is influenced, e.g. by drugs, alcohol or medication, are not authorized.

Observe the age and occupational regulations at the site when choosing personnel.

The following lists the personnel qualifications for the various areas of activity:

Qualified electrician

Due to specialized training, knowledge and experience as well as knowledge of the relevant standards and regulations, the qualified electrician is able to independently perform work on the electrical systems as well as to detect and avoid possible risks and dangers.

Additionally, the electrician must provide proof of his/her professional qualification that certifies his/her ability to perform work on electrical systems.

The qualified electrician must fulfill the requirements contained in the valid legal accident-prevention regulations.

Qualified personnel

Due to their specialized training, knowledge and experience as well as their knowledge of the relevant standards and regulations, qualified personnel are able to independently perform the work assigned to them as well as to detect and avoid possible risks and dangers.

2.5 Personal safety equipment

Personal safety equipment is used to protect personnel from hazards/dangers that might impair their safety or health during work.

When performing the various tasks at, and with the device, personnel must wear personal safety equipment. Special reference is made of this in the individual chapters within these Operating Instructions. The following provides a description of the personal safety equipment:

- Always wear appropriate personal safety equipment required in the various chapters of these Operating Instructions before commencing work.
- Comply with the personal safety equipment instructions posted within the work area.

Description of personal safety equipment

Additional protective equipment must be worn when handling hazardous media!

As specified in the Safety Data Sheet of the medium, **protective equipment** must be worn when handling hazardous media. In addition, the specifications of the system operator must be followed. If no protective equipment is specified, suitable protective gloves and goggles must be worn.

The protective equipment is used to protect against hazardous media leaks and hazardous media residue in the device.

Goggles



The goggles are used to protect the eyes from flying debris and splashing fluid.

Protective gloves



Protective gloves protect the hands from friction, burns, grazing, abrasion, surface cuts or deeper injuries, as well as from direct contact with hot or cold surfaces.

2.6 Protective systems

Integration within an emergency-stop concept is required

The device is designed for use as a part of a machine or system. It does not have its own controller and does not have an autonomous emergency-stop function.

Before starting up the device, install the emergency-stop equipment and incorporate it into the safety chain of the machine or system.

Connect the emergency-stop equipment so that if there is an interruption in the power supply or in the activation of the power supply after an interruption, dangerous conditions are excluded for persons and valuables.

The emergency-stop equipment must always be freely accessible.

2.7 Replacement parts

WARNING

Risk of injury due to use of incorrect replacement parts!

- Only use original replacement parts from the manufacturer or approved by the manufacturer.
- Always contact the manufacturer in case of doubt.

Use of incorrect or faulty replacement parts may result in dangers to personnel as well as damages, malfunctions or total failure.

Always purchase replacement parts from an authorized dealer or directly from the manufacturer (For contact details, see Page 2).

The replacement parts list is in the annex.

2.8 Environmental protection

NOTICE

Risk to the environment due to improper handling of environmentally hazardous substances!

- Always observe the instructions listed below on the handling and disposal of substances harmful to the environment.
- If harmful substances are released into the environment, take immediate countermeasures. If there is doubt, contact the local authorities, inform them of the damage and request information on suitable countermeasures to be taken.

Serious environmental damage may result if substances harmful to the environment are handled incorrectly, especially if they are disposed of improperly.

Cleaning fluids

Solvent-based cleaning fluids contain toxic substances. They must never be released into the environment and must be disposed of by a waste management company.

Lubricants

Lubricants such as greases and oils contain toxic substances. They must never be released into the environment and must be disposed of by a waste management company.

2.9 Responsibility of the owner

Owner

The owner is the person who operates the device himself for business or commercial purposes or who cedes such use/application to a third-party and who, during operation of the device, has full legal product stewardship for protection of the user, the personnel or third-parties.

Duties of the owner

The device is used in the commercial sector. The owner of the device is therefore subject to legal obligations pertaining to work safety.

In addition to the safety instructions contained in these Operating Instructions, the safety, accident prevention and environmental protection regulations applicable to the field of application of the device must be observed.

In particular, this includes:

- The owner must inform himself regarding the valid health and safety regulations and must perform a risk assessment to additionally determine the risks resulting from the special work conditions

arising at the location at which the device is used, especially in regard to the media used. He must then implement these within Operating Instructions for use of the device.

- Appropriate to the working conditions and the media used, the owner must affix signs within the working area that inform the user of the hazards and dangers present.
- During the entire period of use of the device, the owner must check periodically to ensure that the Operating Instructions correspond to the current state of regulations, and he must make adjustments as necessary.
- The owner must clearly regulate and determine responsibilities for installation, operation, troubleshooting, maintenance and cleaning.
- The owner must fit/retrofit suitable safety equipment within the complete plant/system.
- The owner must ensure that all staff/personnel have thoroughly read and understand these instructions before handling the device. Additionally, he must train the personnel at regular intervals and warn them of dangers.
- The owner must provide the personnel with the required safety equipment and must instruct them that its wear is mandatory.

Additionally, the owner is responsible for ensuring that the device is always kept in a technically perfect condition. The following therefore applies:

- The owner must implement suitable safety measures, appropriate to the media used.
- Different media have different severities of influence on the soiling and wear of/to the device. The owner must set suitable maintenance intervals, depending on the media flowing through the device.
- The owner must ensure that the maintenance intervals described in these Operating Instructions are adhered to at all times.
- The owner must ensure that the device is completely free of all residual media before disposal. Remains of corrosive or toxic materials must be neutralized.

3 Design and function

3.1 Overview



Fig. 2: Front view

- 01 Process connection (outlet)
- 02 Device housing
- 03 Spring
- 04 Sight glass with measuring scale
- 05 Float containing magnets
- 06 Process connection (inlet)
- 07 Switch housing with female socket
or switch housing with cable

3.2 Device description

RVO/U-2 flow meters work according to the functional principle of the variable area flowmeter. The flow monitor is installed into a pipe system and measures the flow-rate of the medium flowing through the pipe system.

A float inside the flow monitor is moved by the flowing medium. A magnetic field is generated by the magnets inside the float. The position of the float is detected by the switch contact. In addition to electrical control through the Reed-contact (switch contact), the current flow rate can also be read-off on the measuring scale on the sight glass.

RVO/U-2 flow monitors are used in, e.g. cooling circuits: The flow monitor monitors the volume flow of the cooling media to ensure it is high enough to ensure sufficient cooling. If the flow through the flow monitor drops below the threshold preset by the operator, the switch contact switches (change-over contact) or opens the contact (normally open contact).

3.3 Component description

Switch contact



Fig. 3: Switch contact and female socket

A potential-free Reed-contact is cast into the switch contact housing assembly (Fig. 3/01). The device is supplied with a connector (Fig. 3/02).

Sight glass



Fig. 4: Sight glass

A measuring scale is burnt onto the sight glass, from which the current rate of flow can be read-off.

4 Transport, packaging and storage

4.1 Safety instructions for transport

Improper transport

NOTICE

The device could be damaged if transported improperly!

- Proceed carefully when unloading transported packages, both on delivery and when transporting in-house. Observe the symbols and instructions on the shipping box
- Remove packaging material just prior to assembly

Objects to be transported may fall or overturn if transported improperly. This may result in damage to the device and/or property.

4.2 Transport inspection

On delivery, make an immediate check for completeness and check for transport damages.

If there are any visible external transport damages, proceed as follows:

- Do not accept the delivery
- Note the damage in the shipping documents or on the delivery note of the transporter and have the driver confirm by signature
- Initiate a claim for damages



Make a claim for each fault as soon as it is detected. Claims for damages can only be invoked within the valid claim periods.

4.3 Packaging

About packaging

The packaging serves to protect the individual components from transport damages, corrosion and other damages until they are installed. Do not discard the packaging and only remove the device from the shipping box immediately before installation.

Handling packaging materials

Dispose of packaging material in accordance with the valid legal regulations and local ordinances.

NOTICE

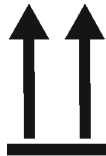
Danger to the environment due to incorrect disposal!

- **Dispose of packaging material in an environmentally safe manner**
- **Comply with the local disposal regulations. If necessary, have the packaging disposed of by approved specialists.**

Packaging is made of valuable raw materials and can be reused in many cases or usefully processed and recycled. Improper disposal of packaging materials may pose a danger to the environment.

4.4 Symbols on the shipping box

Top



The arrows indicate the top side of the package. They must always point upwards, otherwise the content may be damaged.

Fragile



Designates packages with breakable or damageable contents.

Handle the package carefully and do not allow it to fall or be subjected to jarring or severe vibration.

4.5 Storage

Storing the packages

Store the packages under the following conditions:

- Do not store in the open
- Store dry and dust-free
- Do not subject to any aggressive media
- Protect from direct sunlight
- Avoid mechanical vibrations and shocks
- Storage temperature: 0 to 35 °C / 32 °F to 95 °F
- Relative humidity: max. 60 %
- Do not stack
- If storing for longer than 3 months, regularly check the general condition of all parts as well as of the packaging.



Storage instructions in addition to the instructions listed here may be listed on the packages. Follow these instructions also.

5 Installation and initial startup

5.1 Safety

Incorrect installation and initial startup

⚠ WARNING

Risk of injury due to incorrect installation and initial startup!

- Ensure that the site is sufficiently cleared of obstructions before commencing work
- Handle open or sharp edged components carefully
- Ensure that the assembly location is orderly and clean! Parts and tools lying about or on top of each other are potential causes for accidents
- Assemble components properly. Observe the stipulated tightening torque of screws
- Before initial startup, make sure that all installation work has been performed and completed in compliance with the specifications and instructions in these Operating Instructions

Incorrect installation and initial startup may result in severe injury and considerable damage to property.

Safeguard against restart

⚠ WARNING

Danger to life due to unauthorized restart!

- Before commencing work, switch off the power supply to the entire system/plant and secure against restart

There is a risk of severe or even fatal injury due to unauthorized restart of the power supply during installation.

5.2 Requirements at the place of installation

The place of installation must meet the following requirements:

- The device must not be under water.
- The surrounding area must be sufficiently illuminated.
- There must be sufficient space to prevent accumulation of trapped heat.
- The device must not be installed as a supporting part in a pipe construction.
- The device may not have anything affixed to, or suspended from it.
- The flow monitor must be installed in such a way as to preclude damage by outside force. It must be ensured that the flow monitor cannot be damaged. If necessary, install an appropriate impact protection device.

- External magnetic fields will influence the switch contact. Keep sufficient distance to magnetic fields (e.g. electric motors).
- Piping, process connections or supports made of ferromagnetic material influence the magnetic field of the device. Keep a space of minimum 100 mm to those materials (e.g. steel).

5.3 Preparatory work

The following criteria must be met during installation to ensure correct functioning of the flow monitor:

⚠ WARNING

Danger due to incorrect installation!

- Do not install the flow monitor as a supporting part in a pipe system
- Do not use the flow monitor with quick acting valves
- Do not use the flow monitor with solenoid valves

If the criteria listed above are not observed when installing the flow monitor, dangerous/hazardous situations may arise.

Installation position/direction of flow

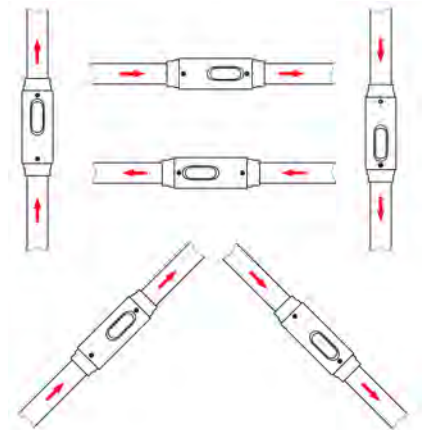


Fig. 5: Installation position/direction of flow

Only install the flow monitor in one of the positions displayed in the drawing. The medium must flow in the direction of the arrow (from a low to a high scale value).

Unimpeded flow sections

NOTICE

Measuring inaccuracy due to incorrect installation!

- Ensure that the unimpeded flow sections are maintained
- Never reduce the pipe diameter immediately before the device

The measuring accuracy of the flow monitor is influenced by its position within the pipe system. Changes in cross-section, branch-offs or arcs in the pipe system impair measuring accuracy.



We recommend unimpeded flow sections, type BS-228.

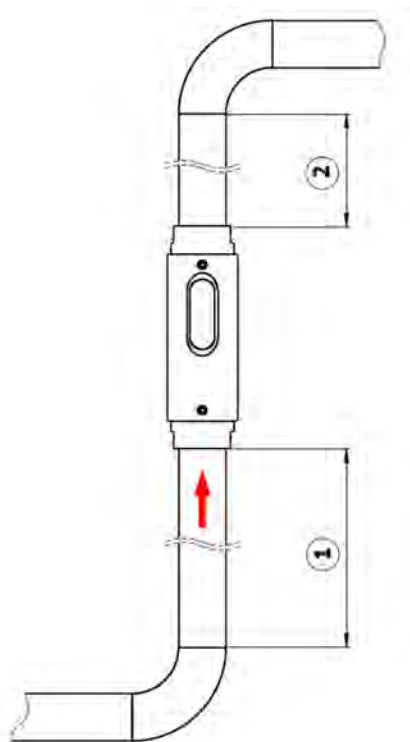


Fig. 6: Unimpeded flow sections

- 1 10x DN
- 2 5x DN

- There must be an unimpeded flow section of 10x DN (rated width) before the device.
- There must be an unimpeded flow section of 5x DN (rated width) after the device.

Unimpeded outlet

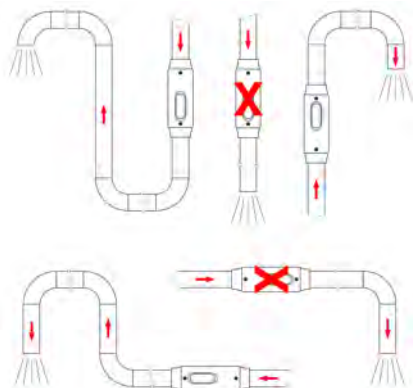


Fig. 7: Unimpeded outlet

If the pipe system ends at an unimpeded outlet, the flow monitor must not be installed directly in front of the opening. The device must always be completely filled with media to ensure measuring accuracy.

Strainer

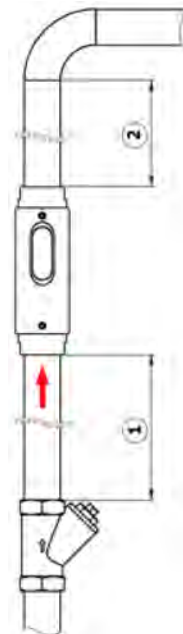


Fig. 8: Strainer

- 1 min. 10x DN
- 2 min. 5x DN

If the medium is contaminated by solids, a strainer must be installed before the device. (Fig. 8).



We recommend a Type SF, SFD or SFM strainer.

Prepare the device

NOTICE

Risk of damage to property due to contamination!

- Ensure that there are no foreign particles in the device
- Ensure that the device is not soiled
- Do not use any medium containing solids

Contamination and deposits may impair the free movement of the float, thereby damaging the device.



Due to quality assurance measures, there may be some test medium (water) residue in the device.

1. → Unpack the device and ensure that there are no remains of packaging material in the device
2. → Examine the device for residue of test medium and drain, if necessary
3. → Check device for soiling and flush with clean medium, if necessary

5.4 Installation in the pipe system

⚠ WARNING

Risk of injury from pressurized lines!

- Depressurize the pipe system before installing the device.

If the pipe system is under pressure when installing the device, severe injuries may result.

⚠ WARNING

Risk of injury from hot or cold surfaces!

- Before commencing work, ensure that the system has been controlled to a temperature range between 0 and 40 °C.
- Do not touch any parts of the system that are either very cold or very hot.
- Always wear heat-resistant/cold-resistant protective work clothing and protective gloves when working near hot/cold surfaces

Pipelines can heat up/cool down dramatically due to the media flowing through them. Skin contact with hot or cold surfaces may cause severe skin burning/freezing.

⚠ WARNING

Risk of injury from media in the pipe system!

- Before installation, ensure that the pipe system is empty and does not contain any media residue
- Always wear personal protective equipment during installation
- Provide suitable draining devices (collection tank, etc.)

If the pipe system contains toxic or other hazardous media, severe injuries may be caused by escaping media.



A suitable sealant must be selected, depending on the condition/composition of the pipe lines, the medium and the operating and environmental conditions. The sealing method described here is only an example and cannot be used in all cases.

NOTICE

Risk of damage to device due to contaminated pipe system!


- Ensure that the pipe system is clean before installing the device
- If necessary, flush the pipe system with clean medium before installation

Dirt and foreign particles entering the device can damage the device and impair its operation.

Sealing the pipe connection

Personnel:

- Qualified personnel

1.  Nap the thread.

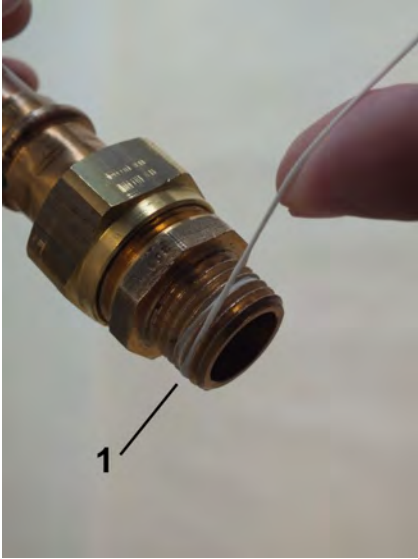


Fig. 9: Apply sealing thread


2.  Apply sealing thread (Fig. 9/1) to the napped area in the thread direction. Observe the quantity recommended by the sealant manufacturer



Fig. 10: Pipe connection with sealing thread

- ⇒ The pipeline is now ready for assembly (Fig. 10)

Install device in pipe system

Personnel:

- Qualified personnel

Protective equipment:

- Protective gloves

Tools:

- Fixed spanner

⚠ CAUTION! Do not hold the device by its threads. These are sharp edged and may cause injury.

1. ➤ Place the threaded end of the device onto the thread of the connecting pipe



Fig. 11: Screw in the device

2. ➤ Fasten the adapter union of the pipeline with an appropriate spanner (Fig. 11/1). When doing so, lock the process connection in place to prevent slip, using a suitable spanner (Fig. 11/2)



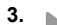

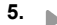


Fig. 12: Screw in the device

3. ➤ Keep turning in the adapter union (Fig. 12/1) while holding the process connection locked (Fig. 12/2) until the connection is tight
4. ➤ Repeat these steps at the other end of the device

5.5 Initial startup

The following steps must be taken before initial startup and any subsequent startup (e.g. after removal and installation during maintenance).

1.  **▲ WARNING!** Ensure that the plant is operating vibration-free. Vibrations could destroy the device. This may result in serious injury to the user.
2.  **▲ WARNING!** Ensure that the medium is flowing continuously. Pulse-like staggered loads could destroy the device. This may result in serious injury to the user.
3.  **NOTICE!** Completely fill the pipelines. Partial filling(s) may result in malfunctions and damage to the device.
4.  **NOTICE!** Vent the pipeline. If there are air pockets in the line during the measurement, this could result in damage to the device caused by hydraulic shock. This may cause malfunctions.
5.  **NOTICE!** Ensure that the plant is operating without cavitation. Cavitation may result in malfunctions and damage to the device.

5.6 Electrical connection

The electrical connection of the flow monitor is accomplished through the connector plug or the cast on power cable leading from the switch housing. The switch contacts employed in these devices are potential free and do not require a power source. Switch contacts and flow monitor have been optimally harmonized. After replacement of a switch contact, the switch point must be readjusted.

 **DANGER**

Danger to life from electrical current

- Only qualified electricians shall work on the electrical system
- If the insulation is damaged, immediately switch off and have repairs performed.
- Before commencing work on live parts of electrical systems and components, disconnect the equipment and ensure that it remains disconnected for the duration of the work. Observe these 5 safety rules when doing so:
 - Isolate (disconnect)
 - Secure against switching back on
 - Check for absence of voltage
 - Ground and short
 - Cover or cordon off other live parts in the vicinity
- Never bridge fuses or put them out of operation. Always observe the correct current ratings when replacing fuses

- Keep moisture away from live parts. This may result in short-circuit

There is an immediate risk to life from electrocution on touching live parts. Damage to the electrical insulation or single components can be extremely dangerous.

5.6.1 Switch contact SG-15 with connector in compliance with EN175301-803

Wiring diagram of the supplied socket (EN 175301-803, Form C) front view.

Wiring diagram

Normally Open (NOC):

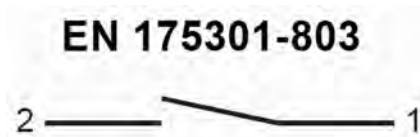


Fig. 13: Switch position under no-flow condition

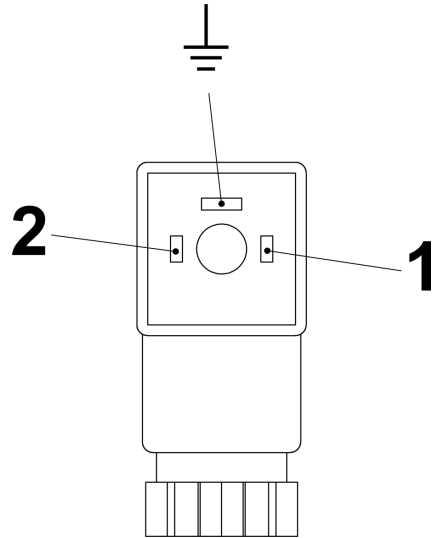


Fig. 14: Pin assignment, plug socket, normally open contact. The ground-pin is not used.

Change Over (COC):

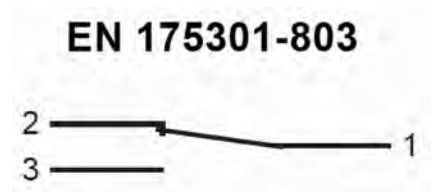


Fig. 15: Switch position under no-flow condition

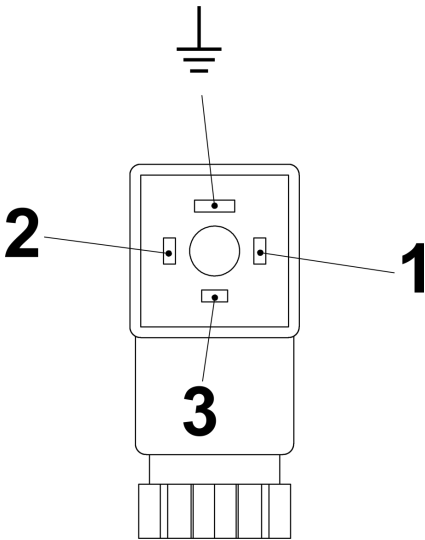


Fig. 16: Pin assignment, plug socket, change over contact. The ground-pin is not used.

5.6.2 Plug connector M12x1

Wiring diagram, connector M12x1

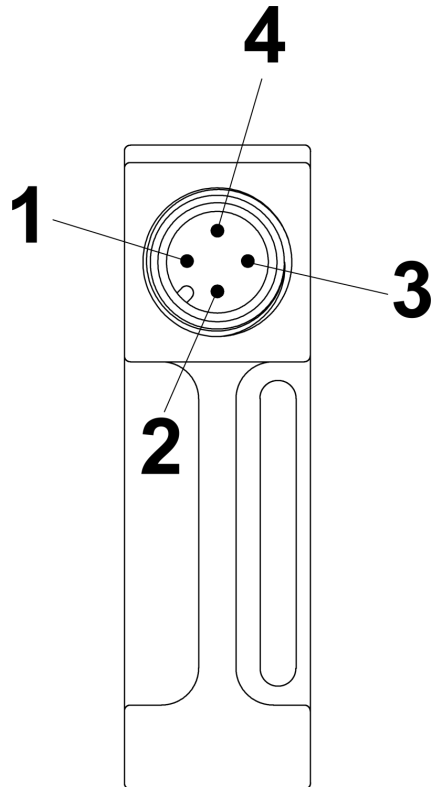


Fig. 17: Pin assignment, connector M12x1 (Form 15x50)

Wiring diagram

Normally Open (NOC):

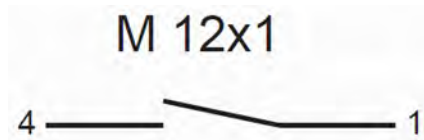


Fig. 18: Switch position under no-flow condition

Change Over (COC):

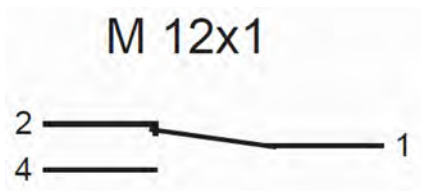


Fig. 19: Switch position under no-flow condition

5.6.3 Cable

The individual cores of the cable are numbered according to the following connection diagram.

Wiring diagram

normally open:

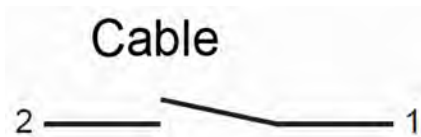


Fig. 20: Switch position under no-flow condition

5.6.4 Degree of protection (IP-Code)

The specified degree of protection (IP) is only ensured if approved connection material is used (see following table).

Device connection	Specification of connection material	Degree of protection
EN1753 01-803 with gland	Diameter of connection cable: 5–6mm	IP65
M12x1	Plug connector M12x1	IP65
Cable	-	IP67

5.7 Grounding the device

When installing the device in a pipe system, ensure that the device is grounded to the pipe system to avoid a dangerous electrical potential difference.

5.8 Plug connection

Personnel:

- Qualified electrician

Tools:

- Flat-bladed screwdriver

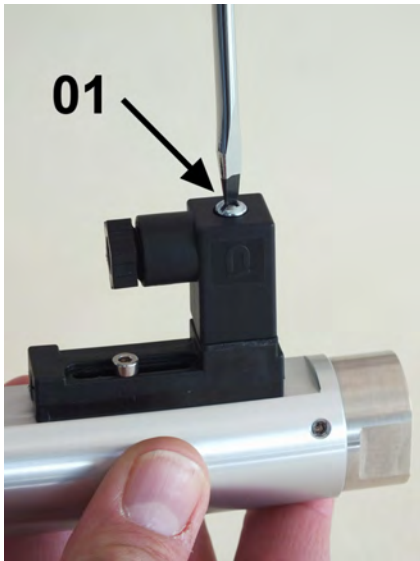


Fig. 21: Detach socket

1. ➔ Release the fixing screw (Fig. 21/01) from the socket.

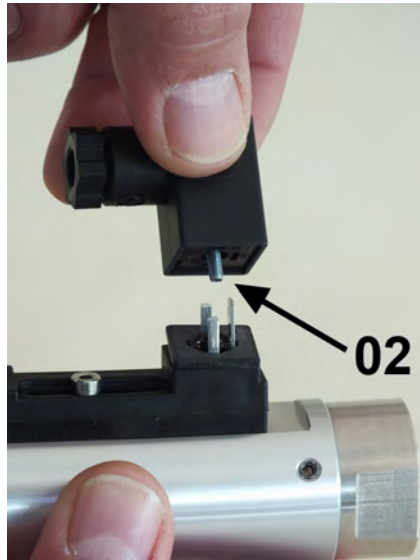


Fig. 22: Remove socket

2. ➔ Remove the socket (Fig. 22/02).



Fig. 23: Disconnect inner section

3. ➔ Remove the inner section from the socket. To do this, place a flat-bladed screwdriver into the slot (Fig. 23/01) and carefully pry out the inner section.



Fig. 24: Disconnect the screw connection

4. ➔ Unscrew the screw connection (Fig. 24/01) by turning in the left direction
5. ➔ Guide the connecting wire through the screw connection in the socket
6. ➔ Make the connections as shown in connection diagrams (Fig. 25 and Fig. 26)
7. ➔ Place the inner section (Fig. 23/01) back into the socket and push until it locks on
8. ➔ Retighten the screw connection (Fig. 24/01) by turning it to the right

9. → Plug the socket onto the connector plug and tighten the fixing screw (Fig. 21/01).

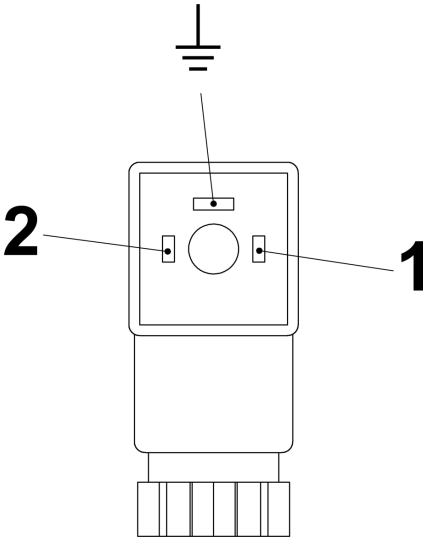


Fig. 25: Pin assignment, plug socket, normally-open contact (Form 15x50)

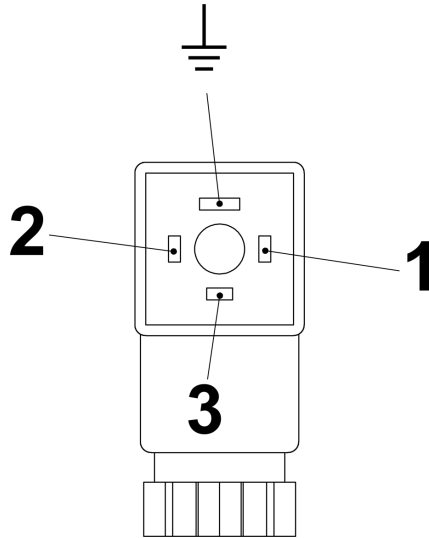


Fig. 26: Pin assignment, plug socket, change-over contact (Form 15x50)

5.9 Contact protection measures

The Reed-switches used in the switch contacts are designed to be very sensitive to overload. To prevent destruction of the switch contact, the values specified on the rating plate of the switch contact must never be exceeded (not even temporarily).

There is a risk of overload from:

- inductive loads
- capacitive loads
- ohmic loads.

Suitable measures must be taken to protect against overload (see following examples):

Inductive load

There is danger of voltage peaks from inductive loads when switching off (up to 10 times the rated voltage). Inductive loads are caused by, e.g.:

- Contactors, relays
- Solenoid valves
- Electric motors

Examples of protective measures:

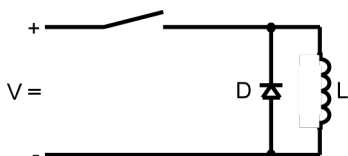


Fig. 27: Example 1

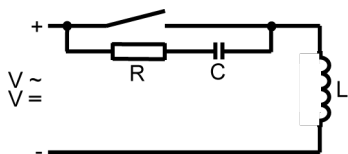


Fig. 28: Example 2

Capacitive loads

There is a danger of high current peaks from capacitive loads when switching-on the switch contact (exceeding rated current). Capacitive loads are caused by, e.g.:

- Long connecting cables
- Capacitive consumers

Example of protective measure:

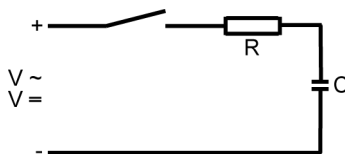


Fig. 29: Protective measure against capacitive loads

Ohmic loads

There is a danger of high current peaks from ohmic loads when switching-on the switch contact. The reason for this is that the glow filament has a low resistance at low temperatures. Ohmic loads are caused by, e.g.:

- Filament bulbs
- Motors during startup

Examples of protective measures:

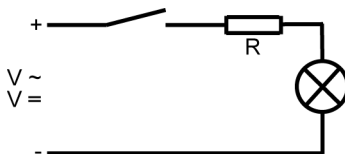


Fig. 30: Example 1

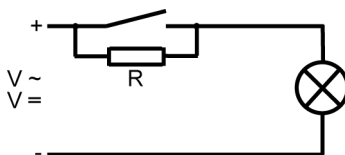


Fig. 31: Example 2

Protection against ohmic loads can be achieved through installation of a resistor in the circuit, or by heating the glow filament. For connection to high-impedance consumers (ex. PLC), a protective circuit is not needed.

6 Operation

6.1 Setting the switch point

Setting the switch point of an installed device

i

The following instructions describe the procedure for a Normally Open Contact (NOC). The actual state (open or closed), can be determined using a continuity meter.

Personnel:

- Qualified personnel

Tools:

- Hex screwdriver

1. ➤ Adjust the flow to be monitored and read it off at the scale on the device. The top edge of the float is the read-off point.



Fig. 32: Loosen set screw


2. ➤ Loosen the set screw of the switch contact (Fig. 32) using a hex screwdriver.
3. ➤ Slowly push the switch contact in the opposite direction of flow up to the stop.

Condition 1: The contact is closed

4. ➤ Slowly push the switch contact in the direction of flow until the contact opens.

Condition 2: The contact is open

5. ➤ Slowly push the switch contact in the direction of flow until the contact closes. Keep pushing slowly in the direction of flow until the contact opens.

- 6.  Re-tighten the switch contact set screw (Fig. 32) using a hex screwdriver. When doing so, observe the correct tightening torque of the screw.




 *Chapter 11.1 “Tightening torque” on page 72*

- ⇒ The set switch point corresponds to the switch-off point of the switch contact by decreasing flow.


Setting the switch point of a non-installed device





Fig. 33: Loosen set screw


- 1.  Loosen the set screw of the switch contact (Fig. 33) using a hex screwdriver.
- 2.  Using a non-magnetic rod (e.g. test rod), move the float to the point on the measuring scale that displays the flow rate to be monitored. The top edge of the float is the read-off point.
- 3.  Slowly push the switch contact in the opposite direction of flow up to the stop.

Condition 1: The contact is closed

- 4.  Slowly push the switch contact in the direction of flow until the contact opens.

Condition 2: The contact is open

- 5.  Slowly push the switch contact in the direction of flow until the contact closes. Then keep pushing slowly in the direction of flow until the contact opens.
- 6.  Re-tighten the set screw of the switch contact (Fig. 33) using a hex screwdriver. When doing so, observe the correct tightening torque of the screw.

 *Chapter 11.1 “Tightening torque” on page 72*

- ⇒ The set switch point corresponds to the switch-off point of the switch contact by decreasing flow.

6.2 Checking the flow


Reading-off the flow value

Personnel:

- Qualified personnel

Protective equipment:

- Goggles

3.  Read-off the flow value from the measuring scale

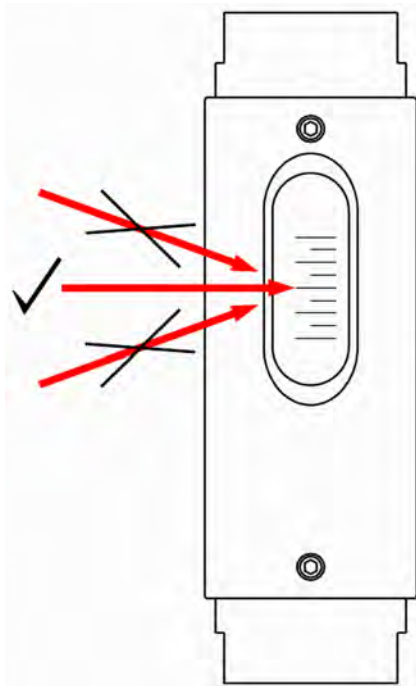




Fig. 34: Reading-off the measuring scale

1.  The top edge of the float is the read-off point
2.  To obtain greatest reading accuracy, read-off at eye level. (Fig. 34, middle arrow). The read-off value can be falsified by viewing at an angle

7 Troubleshooting

This chapter describes possible malfunctions of the device, their causes and repair.

If malfunctions persist or increase, shorten the maintenance interval to meet the actual operating conditions.

For malfunctions not described in this chapter, please contact the manufacturer (see service address on page 2).

7.1 Safety

Work performed incorrectly to remedy a malfunction

⚠ WARNING

Risk of injury due to incorrect repair of malfunction!






- Ensure that the site is sufficiently cleared before commencing work
- Ensure that the repair location is orderly and clean! Components and tools that are lying about or on top of each other are potential causes of accidents
- If components have been removed, observe correct assembly procedures. Reinstall all fixing/fastening elements and observe the prescribed tightening torque for the screws
↳ *Chapter 11.1 "Tightening torque" on page 72*
- Before placing the device back into operation, ensure that all work has been performed and completed in compliance with the specifications and instructions in these Operating Instructions

Work performed incorrectly may result in severe injury and considerable damage to property

Conduct in case of malfunction

The complete machine or system may be unsafe if there is a defect at the flow monitor (e.g. broken sight glass).

The following always applies:

1.  In case of malfunctions that present an immediate danger to persons or valuables, proceed according to the valid emergency plans for the system
2.  Determine the cause of the malfunction
3.  Before repair, ensure that there is no danger to persons from escaping media
4.  If necessary, allow the pipeline and device to cool down or to warm up before commencing work
5.  Malfunctions must be corrected by qualified personnel



The following troubleshooting guide provides an indication of who is qualified to repair the fault.

7.2 Troubleshooting guide

Fault description	Cause	Remedy	Personnel
The switch contact does not switch.	No medium flowing through flow monitor	Check that medium is flowing through the pipe-line	Qualified personnel
	Flow is too low or the switch contact is set too high	<ul style="list-style-type: none"> ■ Adjust the switch contact to a lower flow rate ■ Use the device at another measuring range ■ Increase the flow rate 	Qualified personnel
	Incorrect reduction fitting or pipe diameter is too small	<ul style="list-style-type: none"> ■ Correct pipe diameter 	Qualified personnel
	Float is stuck	Disassemble and clean the device	Qualified personnel
	Switch contact is defective.	<ul style="list-style-type: none"> ■ Remedy the cause of the defect (short-circuit, overload) ■ Replace the switch contact 	Qualified personnel
Switch contact is permanently switched.	Flow is too high or the switch contact is set too low	<ul style="list-style-type: none"> ■ Reduce the flow ■ Adjust the switch contact to a higher flow rate ■ Use the device at another measuring range 	Qualified personnel

Fault description	Cause	Remedy	Personnel
Switch contact is permanently switched.	Float is stuck	Disassemble and clean the device	Qualified personnel
	Switch contact is defective	<ul style="list-style-type: none"> ■ Remedy the cause of the defect (short-circuit, overload) ■ Replace the switch contact 	Qualified personnel
The switch point is not the same as the actual flow rate.	Improper scale installed for media used	Request proper conversion table or scale for media used	Qualified personnel
	Incorrect reduction fitting or pipe diameter is too small	<ul style="list-style-type: none"> ■ Correct pipe diameter 	Qualified personnel
	Device is dirty	Disassemble and clean the device	Qualified personnel
	Device is defective	Remove device from system and contact the manufacturer	Qualified personnel

8 Maintenance

8.1 Safety

Maintenance work performed incorrectly

WARNING

Risk of injury due to maintenance work performed incorrectly!

- **Ensure that the site is sufficiently cleared before commencing work.**
- **Ensure that the repair location is orderly and clean! Components and tools that are lying about or on top of each other are potential causes for accidents.**
- **If components have been removed, observe correct assembly procedure. Reinstall all fixing/fastening elements and observe the prescribed tightening torque for the screws (see Chapter 11.1).**
- **Before placing the device back into operation ensure that all work has been performed and completed in compliance with the specifications and instructions in these Operating Instructions.**

Maintenance work performed incorrectly can result in severe injury and considerable damage to property.

8.2 Maintenance plan

Intervals for replacing wear parts

RVO/U-2 type flow monitors require very little maintenance due to the small number of moving parts. The intervals for the replacement of wear parts depend significantly on the operating conditions as well as on the composition of the medium flowing through the device. For this reason, no intervals have been set by the manufacturer. The operator must determine suitable intervals based on the local conditions and circumstances.

Interval	Maintenance work	Personnel
	Visual inspection for dirt/soiling	Qualified personnel
	Visual inspection for free movement of float	Qualified personnel
	Visual inspection for leaks from the device	Qualified personnel
	Check function of switch contact	Qualified personnel

8.3 Removal from the pipe system

The flow monitor must first be removed from the pipe system before performing maintenance work.

⚠ WARNING

Risk of injury from pressurized lines!

- Depressurize the system before removing the device

Severe injury may result if the pipe system is under pressure when removing the device.

⚠ WARNING

Risk of injury from hot or cold surfaces!

- Before removing the device, ensure that the machine or system and the flow monitor have been controlled to a temperature range between 0 °C and 40 °C
- Do not touch any part of the machine or system that is either very cold or very hot
- Always wear heat-resistant/cold-resistant protective work clothing and protective gloves when working near hot/cold surfaces

Pipelines can heat up/cool down dramatically due to the media flowing through them. Skin contact with hot or cold surfaces causes severe skin burn or frostbite.

⚠ WARNING

Risk of injury from media in the pipe system!

- Before removing the device, ensure that the pipe system is empty and does not contain any media residue
- Always wear personal protective equipment when removing the device

If the pipe system contains toxic or hazardous media, severe injury may be caused by escaping media!

⚠ WARNING

Risk of injury from media residue in the device!

- When removing (deinstalling the device from the pipe system), always wear personal protective equipment.
- All requirements specified in the media safety data sheet must be observed in accomplishing the work task.
- Residue of toxic or hazardous media in the device can result in serious injury.

After the pipe system has been emptied, media residue can still be present inside the device. In the case of toxic or hazardous media, this could result in serious injury.

Removing the device from the pipe system

Personnel:


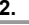
- Qualified personnel

Protective equipment:

- Additional protective equipment must be worn when handling hazardous media!

Tools:

- Fixed spanner

1.  Loosen the adapter union of the pipeline using a suitable spanner. When doing so, lock the process connection in place with a second spanner.
2.  Secure the device against falling and repeat Step 1 at the other end of the device

8.4 Disassembly

To replace wear parts or to clean the device, the flow monitor must first be disassembled.

⚠ WARNING

Risk of injury due to incorrect disassembly!

- The device may still contain media residue
- Wear personal protective equipment when working with dangerous media
- Improper disassembly may cause serious injuries if dangerous media is still present inside the device

⚠ CAUTION

Risk of injury due to incorrect disassembly!

- Before disassembling, ensure that the flow monitor has cooled down/warmed up to a temperature range between 0 and 40°C
- To protect against hazardous media residue, wear personal protective equipment.

Incorrect disassembly may result in injury.

Protective equipment:

- Additional protective equipment must be worn when handling hazardous media!

Personnel:

- Qualified personnel

Protective equipment:

- Goggles
- Protective gloves

Tools:

- Hex screwdriver



Fig. 35: Loosen screws


1.  Loosen the top 3 hex socket screws (Fig. 35/01) using a hex screwdriver.



Fig. 36: Remove the process connection (outlet)

2. → **⚠ CAUTION!** Carefully pull the process connection outlet from the device housing, turning slightly when doing so (Fig. 36), do not apply undue force. The sight glass can break if too much force is exerted or if the process connection is canted.

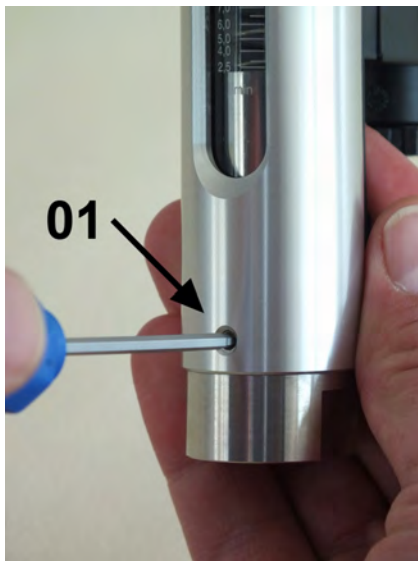


Fig. 37: Loosen screws

3. → Secure the device with one hand to ensure the sight glass does not slip out. With the other hand, loosen the lower 3 hex head screws (Fig. 37/01).



Fig. 38: Remove the inner section

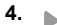

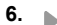

4.  Carefully remove the inner section (Fig. 38/01) of the device (sight glass, spring and float with magnets) as a unit together with the process connection inlet (Fig. 38/02) from the device housing.



Fig. 39: Remove float, magnets and spring

5.  Rotate the inner section as a unit 180° and remove the spring and float with magnets
6.  Detach the sight glass from the process connection (inlet) by turning slightly
7.  If necessary, remove the O-rings from the individual parts.

i

O-ring replacement

It is recommended that the O-rings be replaced during maintenance.

8.5 Maintenance

8.5.1 Cleaning

It is the responsibility of the operator to establish appropriate intervals and procedures for cleaning the individual parts of the device. It must be ensured that the parts are not damaged during the cleaning process. When using cleaning agents, it must be ensured that these are not aggressive to the parts and that there will be no dangerous reactions with media residue. Damaged parts must be replaced.

WARNING

Risk of injury due to improper cleaning!

- To protect against hazardous media residue in the device, wear personal protective equipment.
- Do not use cleaning agents which may lead to dangerous reactions with media residue.
- All requirements specified in the safety data sheet must be observed when handling or otherwise using the medium.
- Residue of hazardous media inside the device can cause serious injury.

The device may still contain media residue.

CAUTION

Risk of injury due to damaged parts!

- Damaged parts must be replaced.
- Carefully clean the parts of the device, so as not to cause damage. This is especially so for the sight glass.
- When cleaning, always wear appropriate personal protective equipment.
- Incorrect disassembly can result in injuries.

If parts of the device are broken or damaged, they may cause injury due to sharp edges or splinters during the cleaning process.

Protective equipment:

- Additional protective equipment must be worn when handling hazardous media!

8.5.2 Parts replacement

Depending on the operating conditions, wear parts such as O-rings, float and sight glass may have to be replaced. Steps required to replace these parts correspond to those used when assembling the device. ↪ *Chapter 8.5.3 "Assembly" on page 52.*

8.5.3 Assembly

After cleaning the individual components, the flow monitor must be reassembled.

Personnel:

- Qualified personnel

Tools:

- Hex screwdriver
- Torque screwdriver and assorted blades

Special tools:

- Test rod
- Magnetic pole indicator

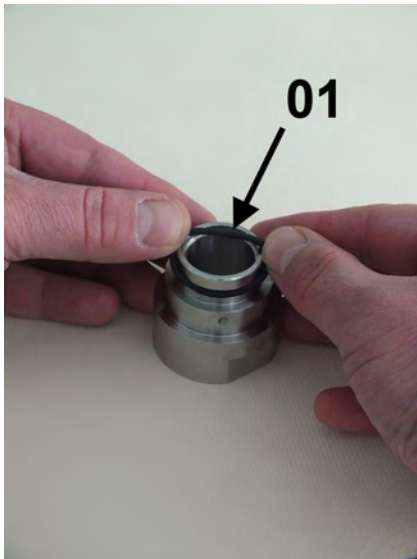


Fig. 40: O-ring (seal)

1. ➤ Carefully install the O-ring (seal) onto the process connection (Fig. 40/01), so that it rests in the upper O-ring groove of the process connection (Fig. 42). When doing so, be careful not to overstretch the O-ring.



Fig. 41: O-ring (Glass buffer)

2. ➤ Carefully install the O-ring (Glass buffer) onto the process connection (Fig. 41/01), so that it is properly seated on the lower portion of the process connection (Fig. 42). When doing so, be careful not to overstretch the O-ring.

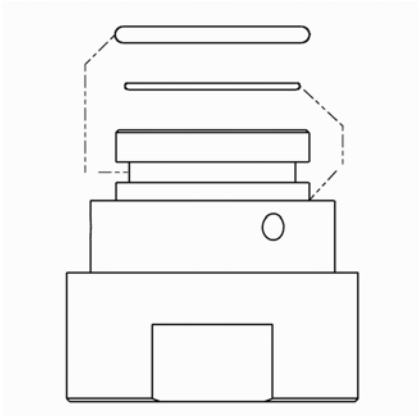


Fig. 42: Position of O-rings

3. → Repeat steps 1 and 2 for the second process connection.

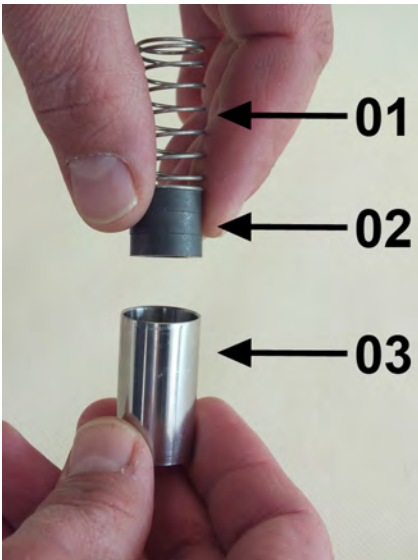



Fig. 43: inner parts

4. → Insert the spring (Fig. 43/01) and magnets (Fig. 43/02) into the float (Fig. 43/03), observing the magnetic polarity (north pole toward the outlet side).
5. → Lubricate the process connection O-rings lightly.

i A list of suitable lubricants is contained in the annex
 ↗ Chapter 11.5 "Lubricants" on page 75.



Fig. 44: Process connection (inlet) in sight glass

6.  **⚠ CAUTION!** Insert the process connection (inlet) (Fig. 44/01) carefully into the sight glass, twisting lightly. The sight glass can break if too much force is exerted or if the process connection is canted.

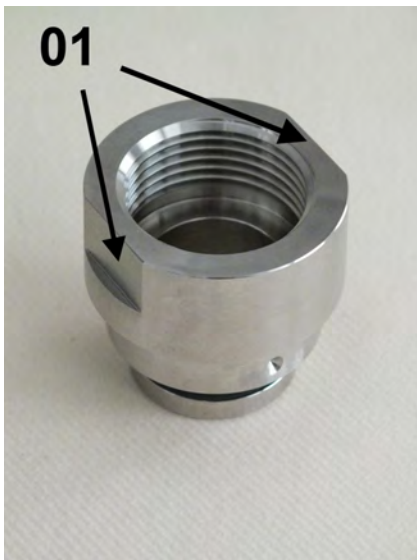


Fig. 45: Spanner flats


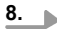
7.  Position the process connection (inlet) (Fig. 45/01) so, that the spanner flats are at a 90° angle to the sight glass scale. The locating bore in the process connection must be centered on the front of the device housing locating screw.



Fig. 46: Insert the process connection into the device housing

8.  Insert the process connection (inlet) and sight glass into the device housing from below, as shown (Fig. 46), keeping the process connection axially aligned to the device housing and making sure that the locating bore in the process connection is centered on the front of the device housing locating screw.

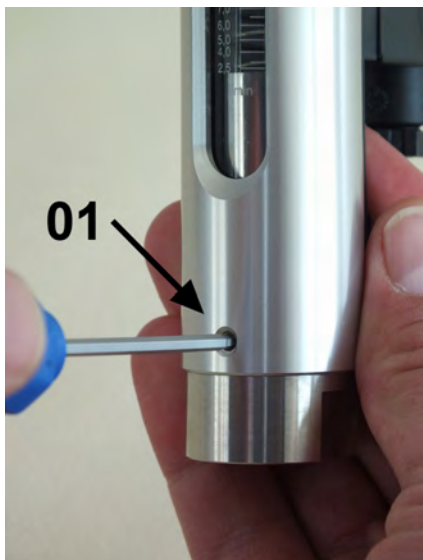


Fig. 47: Secure the process connection (inlet)

- 9.** → Secure the inlet process connection to the device housing with 3 hex socket screws (Fig. 47/01), observing the proper torque.

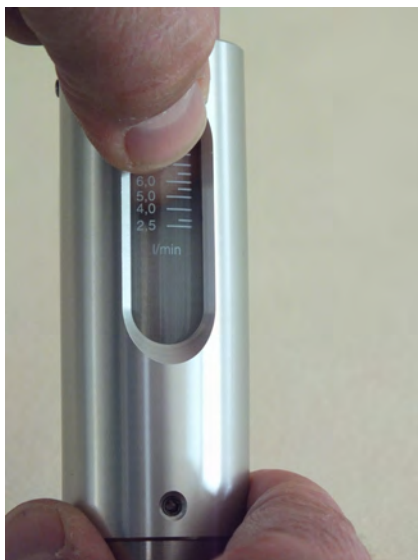


Fig. 48: Align the sight glass

- 10.** → Align the sight glass scale to the sight window of the device housing.



Fig. 49: Insert float and inner parts

- 11.** ➤ Insert the float, magnets and spring into the device housing.



Fig. 50: Position process connection (outlet) in device housing

- 12.** ➤ Insert the process connection (outlet) into the device housing.
- 13.** ➤ Insert the process connection (outlet) (Fig. 50/01) into the device housing by applying light pressure and twisting slightly. When doing so, ensure that the spanner flats (Fig. 50/02) are at an angle of 90° to the sight window of the device housing.



Fig. 51: Tighten hex socket screws

- 14.** ➤ Tighten the 3 hex head screws (Fig. 51/01), observing the proper torque (↪ Chapter 11.1 "Tightening torque" on page 72)



Fig. 52: Check for ease of movement

- 15.** ➤ Check the float for ease of movement by applying pressure with the test rod (Fig. 52).
- ⇒ If the float moves sluggishly, then disassemble the device (↪ Chapter 9.2 "Disassembly" on page 62) and clean the float.

i

If the float is still sluggish after having been cleaned several times, contact the manufacturer.

8.5.4 Switch contact replacement

Tools:

- Flat-bladed screwdriver
- Hex screwdriver

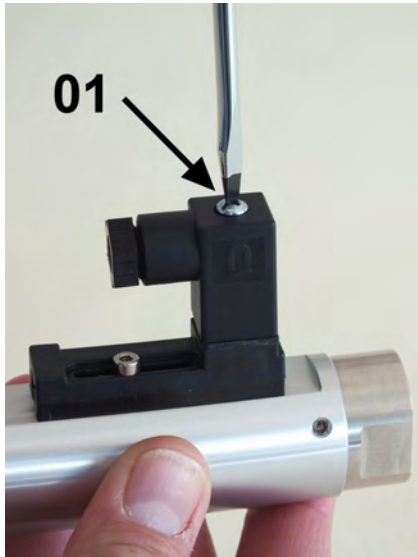


Fig. 53: Loosen female socket

1. ➤ Loosen the fixing screw of the female socket (Fig. 53/01) with a flat-bladed screwdriver.

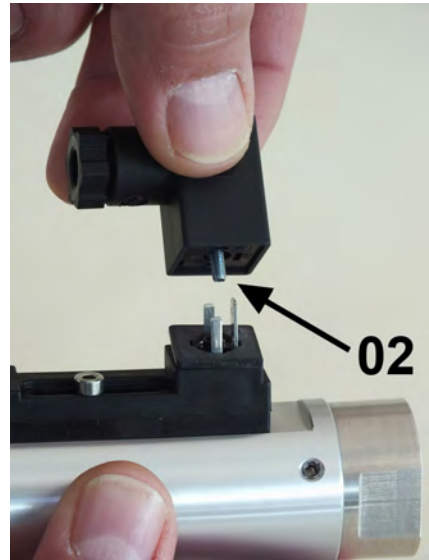


Fig. 54: Remove female socket

2. ➤ Remove the female socket and gasket (Fig. 54/02) by pulling upwards.

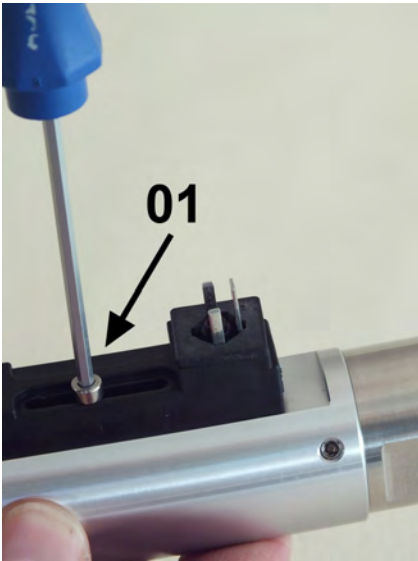



Fig. 55: Loosen set screw

3. ➤ Using a hex screwdriver (Fig. 55/01) remove the set screw of the switch contact



Fig. 56: Remove switch housing

4. ➤ Remove the switch contact from the guide surface (Fig. 56)
5. ➤ Attach the new switch contact
6. ➤ The guide groove of the switch contact must be slipped over the cylinder pin
7. ➤ Insert set screw (Fig. 55/01) and tighten it slightly so that the switch contact can still move easily
8. ➤ Adjust the required switch point by moving the switch contact to the desired position
9. ➤ Retighten the set screw (Fig. 55/1) observing the proper tightening torque ( Chapter 11.1 "Tightening torque" on page 72)

10. ► Position the female socket and gasket, then tighten the fixing screw.

8.6 Measures to be taken after maintenance work

Take the following steps after completion of maintenance work and before switching on the device:

1. ► Check all previously loosened/ released screw connections for tightness.
↳ Chapter 11.1 "Tightening torque" on page 72
2. ► Clean the work area and remove all residual materials, packaging, substances or spills.

9 Disassembly and disposal

After its period of useful life, the device must be disassembled and disposed of in an environmentally safe manner.

9.1 Safety

WARNING

Risk of injury if disassembled incorrectly!

- Ensure that the site is sufficiently cleared before commencing work
- Always wear protective equipment when handling hazardous media residue
- Handle open, or sharp-edged components carefully
- Ensure that the workplace is orderly and clean! Components and tools that are lying about or on top of each other are potential causes for accidents
- Disassemble components professionally
- Secure components so that they do not fall or overturn
- If in doubt, contact the manufacturer

Media residue, sharp edged components, pointed ends and corners on and in the device or on tools may cause injury.

9.2 Disassembly

Before starting the disassembly:







- Remove operating materials and packaging and dispose of properly.

Personnel:

- Qualified personnel

Protective equipment:

- Protective gloves
- Goggles

1.  Remove the device from the pipeline ( *Chapter 8.3 "Removal from the pipe system" on page 47*)
2.  Disassemble the device ( *Chapter 8.4 "Disassembly" on page 48*)
3.  Clean components properly and remove medium residue
4.  Dispose properly

9.3 Return Materials

9.3.1 Return Materials Authorization

For products being returned, regardless of the reason, the currently valid provisions of the returns policy set by MEISTER will apply. Return shipments which do not comply with the returns policy may be refused by MEISTER at the expense of the consignor.

9.4 Disposal

If no return or disposal agreement has been made, recycle disassembled components:

- Scrap metals
- Recycle plastic elements
- Dispose of the remaining components according to their material properties

NOTICE

Danger to the environment due to incorrect disposal!

- **Have electrical scrap, electronic components, lubricants and other supplies disposed of by approved specialists**
- **In case of doubt, obtain information on environmentally safe disposal from the local authority or special disposal expert**

Potential risk to the environment may arise due to incorrect disposal.

10 Technical data

10.1 Device data plate

The data plate is on the mechanical part of the flow monitor/flow meter and contains the following information:



Fig. 57: Device data plate

10.2 Switch contact rating plate

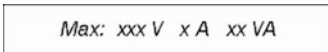


Fig. 58: Switch contact rating plate

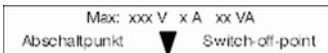
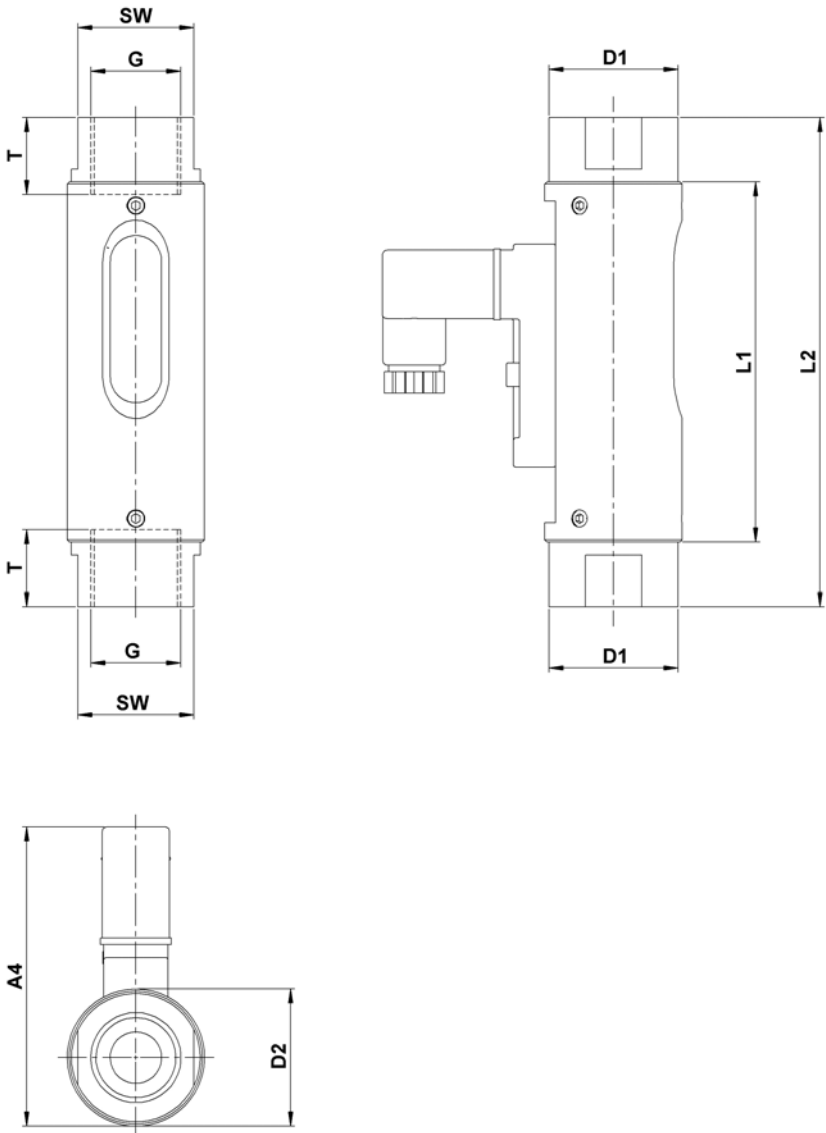


Fig. 59: Switch contact rating plate with positioning arrow

The rating plate is on the switch contact and may provide the following information:

- maximum voltage
- maximum current
- maximum power
- positioning arrow for cut-off point

10.3 Dimension sheet



10.4 General specifications

Type	Overall dimensions (mm)					
	G *	DN	SW	L1	L2	T
RVO/U-2/05	1/2	15	27	84	114	14
RVO/U-2/1	1/2	15	27	84	114	14
RVO/U-2/2	1/2	15	27	84	114	14
RVO/U-2/4	1/2	15	27	84	114	14
RVO/U-2/8	1/2	15	27	84	114	14
RVO/U-2/12	1/2	15	27	84	114	14
RVO/U-2/15	1/2	15	27	84	114	14
RVO/U-2/20	1/2	15	27	84	114	14
RVO/U-2/24	1/2	15	27	84	114	14
RVO/U-2/28	1/2	15	27	84	114	14

Type	Overall dimensions (mm)							weight (g)
	G *	D1	D2	A1	A2	A3	A4	
RVO/U-2/05	1/2	30	32	-	-	-	70	300
RVO/U-2/1	1/2	30	32	-	-	-	70	300
RVO/U-2/2	1/2	30	32	-	-	-	70	300
RVO/U-2/4	1/2	30	32	-	-	-	70	300
RVO/U-2/8	1/2	30	32	-	-	-	70	300

Type	Overall dimensions (mm)							
	G *	D1	D2	A1	A2	A3	A4	weight (g)
RVO/ U-2/12	1/2	30	32	-	-	-	70	300
RVO/ U-2/15	1/2	30	32	-	-	-	70	300
RVO/ U-2/20	1/2	30	32	-	-	-	70	300
RVO/ U-2/24	1/2	30	32	-	-	-	70	300
RVO/ U-2/28	1/2	30	32	-	-	-	70	300

* NPT threads on request

** Sealed in cable weight, 2m approx 80g

10.5 Electrical specifications

Change-Over Contact (COC)

Data	Value	Unit
Voltage	250	V
Current, maximum	1,5	A
Power, maximum	50	VA
Minimum load	3	VA

Normally Open Contact (NOC)

Data	Value	Unit
Voltage	230	V

Data	Value	Unit
Current, maximum	3	A
Power, maximum	60	VA

Change-Over Contact (COC) M12x1 (-20 °C–85 °C)

Data	Value	Unit
Voltage	125	V
Current, maximum	1,5	A
Power, maximum	50	VA
Minimum load	3	VA

Normally Open Contact (NOC) M12x1 (-20 °C–85 °C)

Data	Value	Unit
Voltage	125	V
Current, maximum	3	A
Power, maximum	60	VA

Change-Over Contact (COC) PLC

Data	Value	Unit
Voltage	250	V
Current, maximum	1	A
Power, maximum	60	VA

10.6 Measuring ranges

10.6.1 Standard measuring ranges

Type	Switch range for H ₂ O at 20 °C*		
	l/min	gph	gpm
RVO/U-2/05	0,2 – 0,5	3,2 – 8,0	
RVO/U-2/1	0,3 – 1,0	4,8 – 16,0	
RVO/U-2/2	0,7 – 2,0	11,0 – 32,0	
RVO/U-2/4	1,6 – 4,0		0,4 – 1,05
RVO/U-2/8	3,0 – 8,0		0,8 – 2,15
RVO/U-2/12	4,5 – 12,0		1,2 – 3,15
RVO/U-2/15	6,0 – 15,0		1,6 – 4,0
RVO/U-2/20	8,0 – 20,0		2,1 – 5,3
RVO/U-2/24	9,5 – 24,0		2,5 – 6,3
RVO/U-2/28	12,0 – 28,0		3,2 – 7,4

* The specified data are switch-off points. Other switch ranges are available on request.

10.7 Operating data

Description	Value	Unit
Max. media temp.	100 (optional: 160)	°C
Min. media temp.	-20	°C
It must be ensured that the medium does not freeze.		
Max. operating pressure	16	bar

Pressure loss	0,02 – 0,3	bar
Measuring accuracy	± 10 % of full scale value	

Operating data for devices employed in explosion hazard zones differs from the above and are specified in the Operating Instructions for "RVO/U-2 Module ATEX", Chapter 4.

11 Appendix

11.1 Tightening torque

Component/ function	Description	Size	Torque	Qty
Device housing screw	Hexagon socket screw	M4x5	1,4 Nm	6
Switch contact housing assembly screw	Cylinder head screw	M3x10	0,4 Nm	1

Item	Nr. of pieces	Description
9	1	spring
10	1	process connection (outlet)
11	1	Cylinder pin (switch contact)
12	1	switch contact with male connector
13	1	female socket and gasket
14	1	fixing screw (female socket)
15	1	fixing screw, hex.

11.3 Tools

The following tools are required:

Tool

- Fixed spanner 27 mm
- Flat-bladed screwdriver, blade width 5,5 mm
- Hex screwdriver 2 mm
- Hex screwdriver 2,5 mm
- Torque screwdriver, and corresponding blades

Special tool

- Test rod RVO/U-2
- Magnetic pole indicator

11.4 Sealant



Before using a sealant, ensure that it is compatible with the media used and that it can be employed under the given operating conditions.

- Ensure proper seal
- Use a suitable sealant. Liquid sealants will damage the flow monitor
- Always follow the sealant manufacturer's instructions

11.5 Lubricants



Before using a lubricant, always make sure that it is compatible with the operating medium.

For the proper mounting of O-rings, device-specific O-ring installation tools may be purchased from the manufacturer.

The following lubricants are suitable to facilitate installing the O-rings:

Lubricant	O-ring material		
	NBR	EPDM	FKM
Glycerine*	suitable	suitable	suitable
Soapy water	suitable	suitable	suitable

* Glycerine must not be used if the device is used for sulfuric acid and/or nitric acid.

12 Index

A

Application 9

Assembly 52

C

Cable 33

Component groups 19

Connected loads

NOC 68

Connector

M12x1 32

Contact 7

Contact protection measures 36

Copyright 3

Correct use in accordance with
these instructions 9

Customer service 7

D

Degree of protection

IP-Code 33

Device data plate 64

Device description 18

Dimension sheet 65

Disassembly

Maintenance 48

Disassembly

Disposal 62

Disposal 63

E

Electrical connection 30

Environmental protection 15

cleaning fluids 15

lubricants 16

F

Fault table 44

flow value 41

G

General

safety 8

H

Hazard

electrical current 11

Hazards

mechanical 11

media 13

radiation 12

temperature 12

I

Initial startup 30

Installation

Pipeline 26

Preparations 23

Sealing 27

L

Limitation of liability	3
Lubricant	75

M

Maintenance work	47, 51
Measuring ranges	70

O

Operating conditions	70
Overview	18
Owner	16

P

Packaging	20
Parts replacement	52
Plug connection	34
Plug connector	
EN175301-803	31
Precautions	
general	10
Preparation	
Device	26

R

Read-off	41
Replacement parts	15, 73
Return Materials Authorization	62

S

Safety	
disassembly	62
Safety equipment	14, 15

Safety instructions

transport	20
Sealant	74
Service	7
Sight glass	19
Specifications	
Change-Over Contact (COC)	68
Storage	21
Strainer	25
Switch contact	19
Switch contact housing	
replacement	59
Switch contact rating plate	64
Switch point adjustment	39
Symbols	
packaging	21
Symbols used	
in the instructions	8

T

Technical data	
General specifications	67
Tightening torque	72
Tightening torque of screws	72
Tools	
Special tools	74
Transport inspection	20

U

Unimpeded flow sections	24
-----------------------------------	----

W

Warranty and guarantee provisions . 7